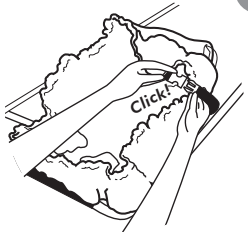


# Fold n' Carry™ Instructions



1

## Release elastic perimeter

While facing handles of shopping cart, release elastic perimeter of Floppy Seat® from sides of cart. Unloop safety belt from back grid of shopping cart and bring over top of Floppy Seat®. Clip belt together.



2

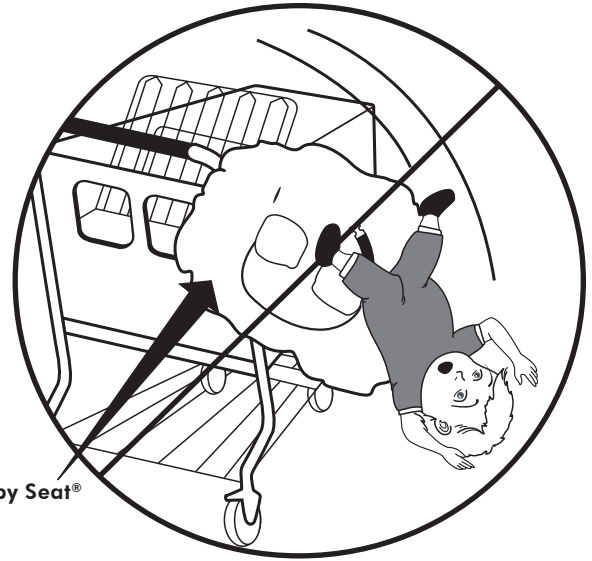
## Fold sides

Fold sides of Floppy Seat® over each other. Starting from end nearest you, roll or fold Floppy Seat® to attach Velcro®.



3

## Use strap to carry!



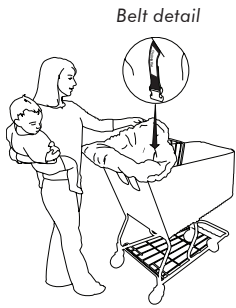
Floppy Seat®



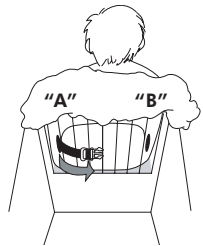
## Warning

Floppy Seat® belt must be secured to shopping cart by looping Floppy Seat® belt through back grid of shopping cart seat before buckling baby. Failure to do so could result in a baby falling out of the shopping cart.  
(See inside for instructions.)

# Instructions

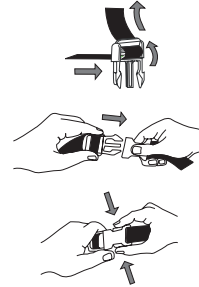
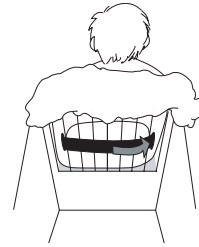


**1 Place Seat on Cart**  
While standing in front of the shopping cart, lay Floppy Seat® over seating area of cart so that short portion of Floppy Seat® belt faces you and is above leg holes. Stretch elastic perimeter of Floppy Seat® to cover all sides of shopping cart seating area and handle of cart. Assure that leg holes of cart are aligned with leg holes of Floppy Seat®. (If installed correctly, short portion of Floppy Seat® belt (see belt detail) will be facing you and above leg holes.)



Back view of shopping cart

**2 Secure Seat to Cart**  
Secure Floppy Seat® belt to shopping cart seat by feeding long portion of belt from point "A" through back grid of shopping cart seat. Loop around 8-10 inches of back grid and feed back through grid and buttonhole "B". Pull on both ends of belt to be sure Floppy Seat® belt is secured to cart.



## **⚠ WARNING!**

Floppy Seat® belt must be secured to shopping cart by looping Floppy Seat® belt through back grid of shopping cart seat before buckling baby. Failure to do so could result in a baby falling out of the shopping cart.

## **Use of Buckle**

Make sure buckle is properly threaded by holding buckle and pulling on belt. The belt should not slip through buckle.

**3 Buckle Baby In**  
Place child in the Floppy Seat® attached to the shopping cart seat as described in Step 2. Clip buckle, in accordance with instructions above, so Floppy Seat® belt is around child. Adjust Floppy Seat® belt to fit snugly around child's waist. Pull on Floppy Seat® belt to be sure child and Floppy Seat® are secured to the shopping cart seat.

